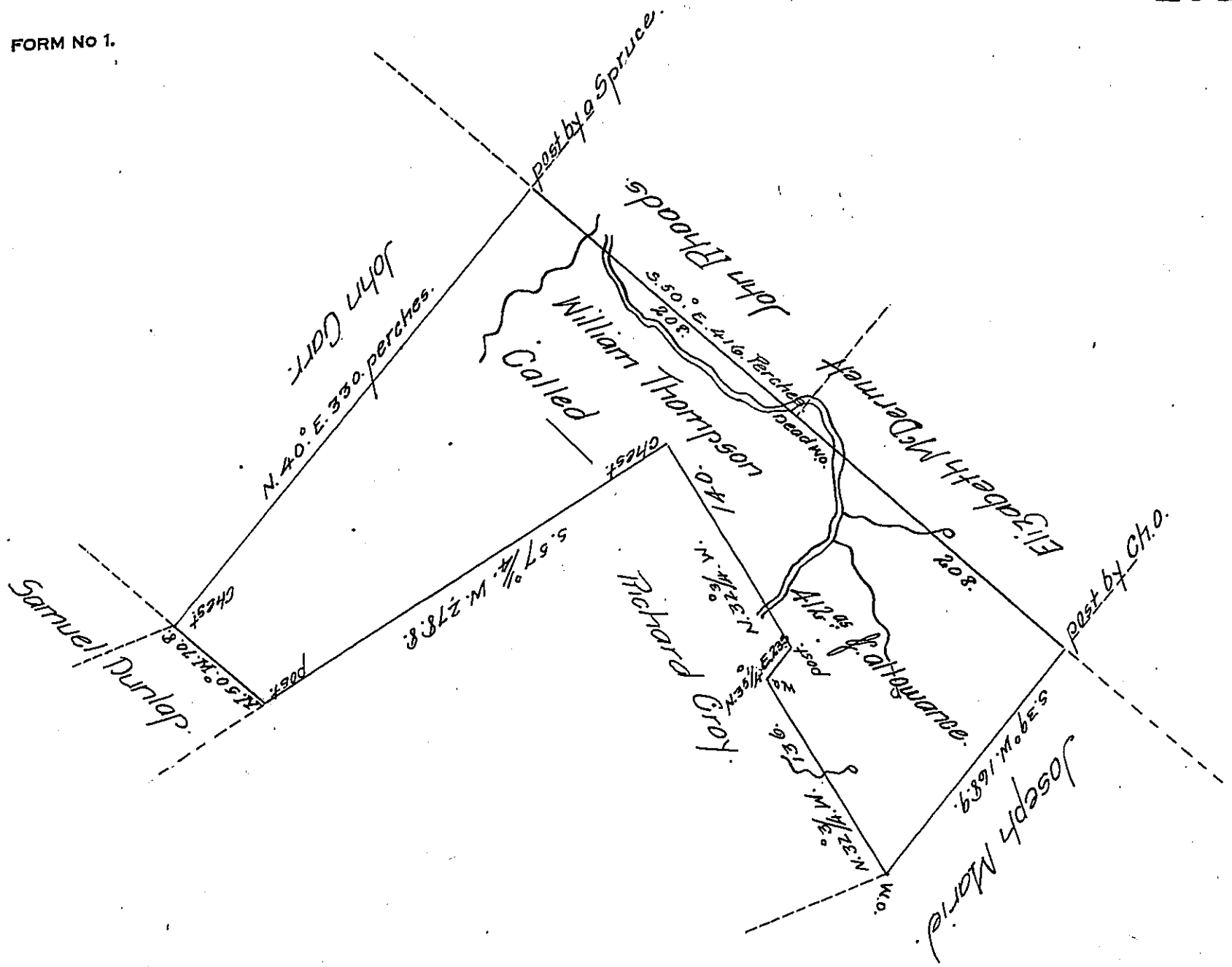


FORM NO 1.



Situate on Scaffold Camp Run a Branch of Mills Creek
 in Londonderry Township Bedford County & Surveyed the 17th
 day of August 1794. In pursuance of a Warrant Dated the 19th Day
 of July. 1793.

By John Wells (son of Richard)

Approved by George Woods Jun^r D. S.

To Daniel Brodhead Esquire
 Surveyor General

IN TESTIMONY that the above is a copy of the original remaining on file in
 the Department of Internal Affairs of Pennsylvania, made
 conformably to an Act of Assembly approved the 16th day of
 February, 1833, I have hereunto set my Hand and caused
 the Seal of said Department to be affixed at Harrisburg,
 this twenty seventh day of May 1907.

Henry Howen
 Secretary of Internal Affairs.